



Introducing the
Speech and Language Therapy Team
at Thomas Bewick School



Fiona



Gill



Imelda



Sarah



Zoe

The Speech and Language Therapy
Team are:

- Fiona Johnstone
- Sarah Croft
- Mary Lavender
- Imelda Woods
- Jennifer Kirby
- Zoe Forsythe (assistant)

We have an office in school.

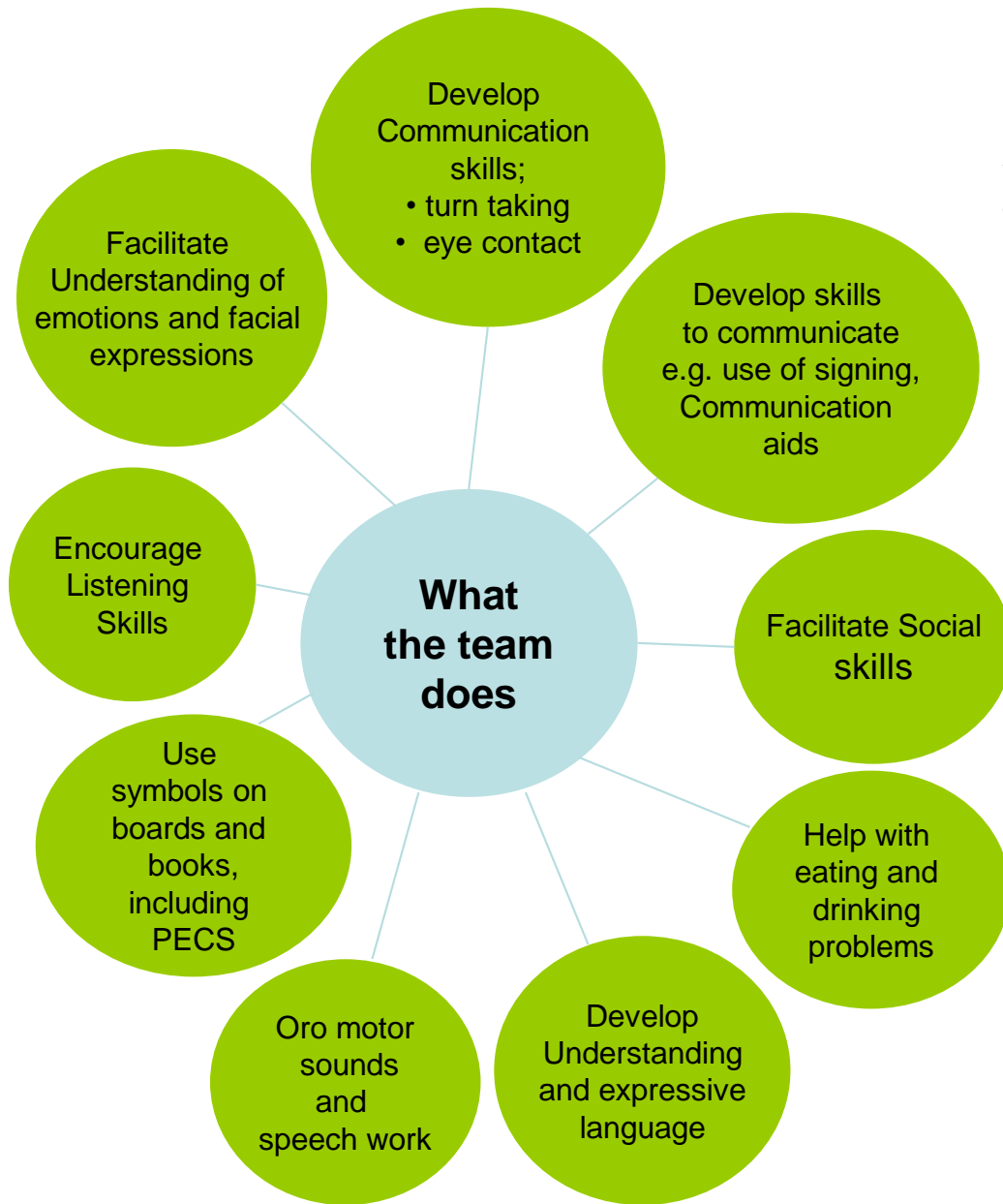
Please contact us on:

Tel. 0191 229 6020

(select option 2 for primary or option 4
secondary)

Messages can be left on these numbers and will
be answered as soon as possible.





Speech and Language Therapy Team

We are the Speech and Language Therapy Team working in your child's School. We work closely with Thomas Bewick School staff to:

- Assess your child's communication skills
- Set targets to enable your child to develop their communication skills
- Plan & carry out therapy sessions in or outside of the classroom, with individual children or in groups
- Provide advice, training & support to school staff
- Help develop effective communication strategies & skills throughout school
- Provide reports for meetings e.g. Annual Reviews
- Provide advice, training & support for all those working with and supporting your child